

MUSCLE CUTS / BEEF CUT PHOTO GUIDE

Table of Contents

Item	Description	Page
105	Beef Chuck, Shoulder (Clod) (114)	3
130	Beef Chuck, Shoulder Petit Tender Boneless (114F)	4
200	Beef Chuck, Roll, 1x1, Boneless (112A)	5
220	Beef Chuck, Chuck Tail Flap (116G)	6
240	Beef Chuck, Chuck Tender (Mock Tender) (116B)	7
250	Beef Chuck, Short Rib Bone-In (130)	8
255	Beef Chuck, Short Rib Boneless (---)	9
270	Beef Chuck, Bone-in Foreshank (---)	10
280	Meaty Neck Bones (---)	11
310	Beef Rib, Ribeye 2x2, Bone-In (109E)	12
320	Beef Rib, Ribeye, Lip-On (112A)	13
360	Beef Rib, Lifter Meat (109B)	14
370	Beef Rib, Back Ribs (124)	15
400	Beef Rib, Short Plate, Short Rib (123A)	16
410	Beef Rib, Short Rib, Boneless (---)	17
420	Short Rib, Beef Rib, Rib Finger Meat (---)	18
432	Beef Brisket, Boneless, Heavy (120)	19
440	Beef Plate, Boneless, 10x22 (---)	20
441	Beef Plate, Top Plate, Tiger Tail, Short Rib Cap (---)	21
455	Beef Plate, Plate Finger Meat (---)	22
470	Beef, Hanging Tender (140)	23
480	Beef Plate, Outside Skirt (121C 4)	24

490	Beef Plate, Inside Skirt (121D 4)	25
521	Beef Loin, Strip Loin, Boneless 0x1 (180 3)	26
540	Beef Loin, Tender, Full, PSMO (189A)	27
550	Beef Loin, Loin Tail (192A)	28
560	Beef Flank, Flank Steak (193)	29
600	Beef Loin, Top Sirloin Butt, XT (184 3)	30
650	Beef Loin, Ball Tips Boneless 2-Up (185B 1)	31
660	Beef Loin, Tri Tip Fat On (185C 1)	32
670	Beef Loin, Peeled Tri Tip (185D)	33
680	Beef Loin, Sirloin, Flap Meat (185A 4)	34
700	Beef Round, Sirloin Tip (Knuckle) Peeled (167)	35
710	Beef Round, Top Inside XT (168 3)	36
720	Beef Round, Eye of Round (171C 3)	37
730	Beef Round, Outside Round (Flat) (171B 3)	38
750	Round, Outside Round, Heel Meat (---)	39
770	Beef Round, Bone-In Shank (Hind) (---)	40
840	Beef, Oxtail (1791)	41

105 Beef Chuck, Shoulder (Clod) (114)

CASE/BAG TYPE

Corrugated Boxes/Shrink Vacuum Bag

PACKING

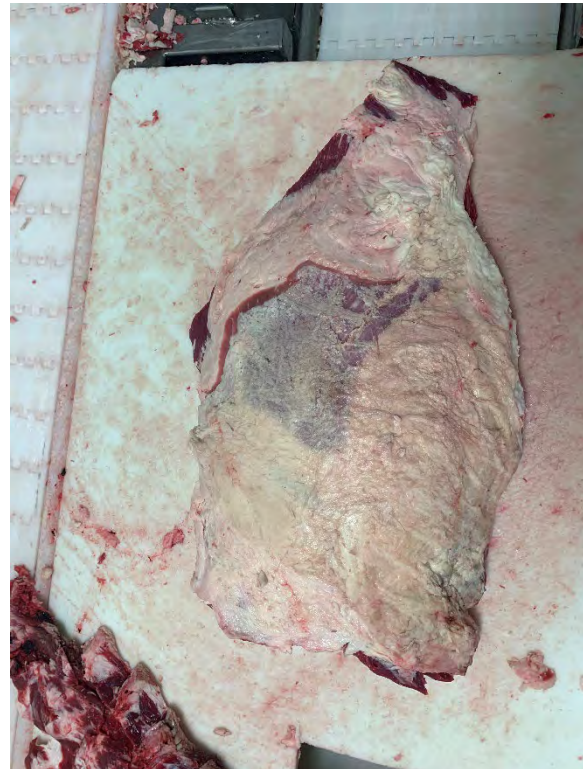
1 per bag | 2 per case

AVERAGE CASE WEIGHT

45 LBS

GRADES

USDA Prime | Choice | Select
No Roll/Ungraded



130 Beef Chuck, Shoulder Petit Tender Boneless (114F)

CASE/BAG TYPE

Corrugated Boxes/Shrink Vacuum Bag

PACKING

12 per bag | 7 per case

AVERAGE CASE WEIGHT

59 LBS

GRADES

USDA Prime | Choice | Select
No Roll/Ungraded



200 Beef Chuck, Roll, 1x1, Boneless (112A)

CASE/BAG TYPE

Corrugated Boxes/Shrink Vacuum Bag

PACKING

1 per bag | 2 per case

AVERAGE CASE WEIGHT

52 LBS

GRADES

USDA Prime | Choice | Select
No Roll/Ungraded



220 Beef Chuck, Chuck Tail Flap (116G)

CASE/BAG TYPE

Corrugated Boxes/Shrink Vacuum Bag

PACKING

4 per bag | 7 per box

AVERAGE CASE WEIGHT

60 LBS

GRADES

USDA Prime | Choice | Select
No Roll/Ungraded



240 Beef Chuck, Chuck Tender (Mock Tender) (116B)

CASE/BAG TYPE

Corrugated Boxes/Shrink Vacuum Bag

PACKING

5 per bag | 4 per box

AVERAGE CASE WEIGHT

52 LBS

GRADES

USDA Prime | Choice | Select
No Roll/Ungraded



250 Beef Chuck, Short Rib Bone-In (130)

CASE/BAG TYPE

Corrugated Boxes/Shrink Vacuum Bag

PACKING

2 per bag | 5 per box

AVERAGE CASE WEIGHT

45 LBS

GRADES

USDA Prime | Choice | Select
No Roll/Ungraded



255 Beef Chuck, Short Rib Boneless (---)

CASE/BAG TYPE

Corrugated Boxes/Shrink Vacuum Bag

PACKING

2 per bag | 12 per box

AVERAGE CASE WEIGHT

49 LBS

GRADES

USDA Prime | Choice | Select
No Roll/Ungraded



270 Beef Chuck, Bone-in Foreshank (---)

CASE/BAG TYPE

Corrugated Boxes/Shrink Vacuum Bag

PACKING

2 per bag | 4 per box

AVERAGE CASE WEIGHT

60 LBS

GRADES

No Roll/Ungraded



280 Meaty Neck Bones (---)

CASE/BAG TYPE

Corrugated Boxes/Shrink Vacuum Bag

PACKING

2 per bag | 6 per box

AVERAGE CASE WEIGHT

42 LBS

GRADES

No Roll/Ungraded



310 Beef Rib, Ribeye 2x2, Bone-In (109E)

CASE/BAG TYPE

Corrugated Boxes/Shrink Vacuum Bag

PACKING

1 per bag | 3 per box

AVERAGE CASE WEIGHT

46 LBS

GRADES

USDA Prime | Choice | Select
No Roll/Ungraded



320 Beef Rib, Ribeye, Lip-On (112A)

CASE/BAG TYPE

Corrugated Boxes/Shrink Vacuum Bag

PACKING

1 per bag | 3 per case

AVERAGE CASE WEIGHT

43 LBS

GRADES

USDA Prime | Choice | Select
No Roll/Ungraded



360 Beef Rib, Lifter Meat (109B)

CASE/BAG TYPE

Corrugated Boxes/Shrink Vacuum Bag

PACKING

fill bags | 3 bags per box

AVERAGE CASE WEIGHT

55 LBS

GRADES

USDA Prime | Choice | Select
No Roll/Ungraded



370 Beef Rib, Back Ribs (124)

CASE/BAG TYPE

Corrugated Boxes/Shrink Vacuum Bag

PACKING

1 per bag | 5 per case

AVERAGE CASE WEIGHT

38 LBS

GRADES

USDA Prime | Choice | Select
No Roll/Ungraded



400 Beef Rib, Short Plate, Short Rib (123A)

CASE/BAG TYPE

Corrugated Boxes/Shrink Vacuum Bag

PACKING

2 per bag | 5 per box

AVERAGE CASE WEIGHT

52 LBS

GRADES

USDA Prime | Choice | Select
No Roll/Ungraded



410 Beef Rib, Short Rib, Boneless (---)

CASE/BAG TYPE

Corrugated Boxes/Shrink Vacuum Bag

PACKING

2 per bag | 12 per box

AVERAGE CASE WEIGHT

55 LBS

GRADES

USDA Prime | Choice | Select
No Roll/Ungraded



420 Short Rib, Beef Rib, Rib Finger Meat (---)

CASE/BAG TYPE

Corrugated Boxes/Shrink Vacuum Bag

PACKING

8 per bag | 10 per box

AVERAGE CASE WEIGHT

31 LBS

GRADES

No Roll/Ungraded



432 Beef Brisket, Boneless, Heavy (120)

CASE/BAG TYPE

Corrugated Boxes/Shrink Vacuum Bag

PACKING

1 per bag | 4 per box

AVERAGE CASE WEIGHT

56 LBS

GRADES

USDA Prime | Choice | Select
No Roll/Ungraded



440 Beef Plate, Boneless, 10x22 (---)

CASE/BAG TYPE

Corrugated Boxes/Shrink Vacuum Bag

PACKING

1 per bag | 5 per box

AVERAGE CASE WEIGHT

58 LBS

GRADES

USDA Prime | Choice | Select
No Roll/Ungraded



441 Beef Plate, Top Plate, Tiger Tail, Short Rib Cap (---)

CASE/BAG TYPE

Corrugated Boxes/Shrink Vacuum Bag

PACKING

2 per bag | 6 per box

AVERAGE CASE WEIGHT

60 LBS

GRADES

USDA Choice | Select
No Roll/Ungraded



455 Beef Plate, Plate Finger Meat (---)

CASE/BAG TYPE

Corrugated Boxes/Shrink Vacuum Bag

PACKING

12 per bag | 8 per box

AVERAGE CASE WEIGHT

60 LBS

GRADES

USDA Choice | Select
No Roll/Ungraded



470 Beef, Hanging Tender (140)

CASE/BAG TYPE

Corrugated Boxes/Shrink Vacuum Bag

PACKING

4 per bag | 6 per box

AVERAGE CASE WEIGHT

47 LBS

GRADES

USDA Prime | Choice | Select
No Roll/Ungraded



480 Beef Plate, Outside Skirt (121C 4)

CASE/BAG TYPE

Corrugated Boxes/Shrink Vacuum Bag

PACKING

4 per bag | 6 per case

AVERAGE CASE WEIGHT

49 LBS

GRADES

USDA Prime | Choice | Select
No Roll/Ungraded



490 Beef Plate, Inside Skirt (121D 4)

CASE/BAG TYPE

Corrugated Boxes/Shrink Vacuum Bag

PACKING

5 per bag | 4 per case

AVERAGE CASE WEIGHT

55 LBS

GRADES

USDA Prime | Choice | Select
No Roll/Ungraded



521 Beef Loin, Strip Loin, Boneless Ox1 (180 3)

CASE/BAG TYPE

Corrugated Boxes/Shrink Vacuum Bag

PACKING

1 per bag | 4 per case

AVERAGE CASE WEIGHT

46 LBS

GRADES

USDA Prime | Choice | Select
No Roll/Ungraded



540 Beef Loin, Tender, Full, PSMO (189A)

CASE/BAG TYPE

Corrugated Boxes/Shrink Vacuum Bag

PACKING

1 per bag | 8 per case

AVERAGE CASE WEIGHT

45 LBS

GRADES

USDA Prime | Choice | Select
No Roll/Ungraded



550 Beef Loin, Loin Tail (192A)

CASE/BAG TYPE

Corrugated Boxes/Shrink Vacuum Bag

PACKING

5 per bag | 5 per case

AVERAGE CASE WEIGHT

48 LBS

GRADES

USDA Prime | Choice | Select
No Roll/Ungraded



560 Beef Flank, Flank Steak (193)

CASE/BAG TYPE

Corrugated Boxes/Shrink Vacuum Bag

PACKING

5 per bag | 4 per case

AVERAGE CASE WEIGHT

43 LBS

GRADES

Choice | Select
No Roll/Ungraded



600 Beef Loin, Top Sirloin Butt, XT (184 3)

CASE/BAG TYPE

Corrugated Boxes/Shrink Vacuum Bag

PACKING

1 per bag | 4 per case

AVERAGE CASE WEIGHT

54 LBS

GRADES

USDA Prime | Choice | Select
No Roll/Ungraded



650 Beef Loin, Ball Tips Boneless 2-Up (185B 1)

CASE/BAG TYPE

Corrugated Boxes/Shrink Vacuum Bag

PACKING

6 per bag | 5 per case

AVERAGE CASE WEIGHT

45 LBS

GRADES

USDA Prime | Choice | Select
No Roll/Ungraded



660 Beef Loin, Tri Tip Fat On (185C 1)

CASE/BAG TYPE

Corrugated Boxes/Shrink Vacuum Bag

PACKING

4 per bag | 5 per case

AVERAGE CASE WEIGHT

55 LBS

GRADES

USDA Prime | Choice | Select
No Roll/Ungraded



670 Beef Loin, Peeled Tri Tip (185D)

CASE/BAG TYPE

Corrugated Boxes/Shrink Vacuum Bag

PACKING

4 per bag | 5 per case

AVERAGE CASE WEIGHT

53 LBS

GRADES

USDA Prime | Choice | Select
No Roll/Ungraded



680 Beef Loin, Sirloin, Flap Meat (185A 4)

CASE/BAG TYPE

Corrugated Boxes/Shrink Vacuum Bag

PACKING

4 per bag | 3 per case

AVERAGE CASE WEIGHT

48 LBS

GRADES

USDA Prime | Choice | Select
No Roll/Ungraded



700 Beef Round, Sirloin Tip (Knuckle) Peeled (167)

CASE/BAG TYPE

Corrugated Boxes/Shrink Vacuum Bag

PACKING

1 per bag | 4 per case

AVERAGE CASE WEIGHT

47 LBS

GRADES

USDA Prime | Choice | Select
No Roll/Ungraded



710 Beef Round, Top Inside XT (168 3)

CASE/BAG TYPE

Corrugated Boxes/Shrink Vacuum Bag

PACKING

1 per bag | 2 per case

AVERAGE CASE WEIGHT

51 LBS

GRADES

USDA Prime | Choice | Select
No Roll/Ungraded



720 Beef Round, Eye of Round (171C 3)

CASE/BAG TYPE

Corrugated Boxes/Shrink Vacuum Bag

PACKING

1 per bag | 8 per case

AVERAGE CASE WEIGHT

55 LBS

GRADES

USDA Prime | Choice | Select
No Roll/Ungraded



730 Beef Round, Outside Round (Flat) (171B 3)

CASE/BAG TYPE

Corrugated Boxes/Shrink Vacuum Bag

PACKING

1 per bag | 3 per case

AVERAGE CASE WEIGHT

51 LBS

GRADES

USDA Prime | Choice | Select
No Roll/Ungraded



750 Round, Outside Round, Heel Meat (---)

CASE/BAG TYPE

Corrugated Boxes/Shrink Vacuum Bag

PACKING

4 per bag | 4 per case

AVERAGE CASE WEIGHT

64 LBS

GRADES

USDA Prime | Choice | Select
No Roll/Ungraded



770 Beef Round, Bone-In Shank (Hind) (---)

CASE/BAG TYPE

Corrugated Boxes/Shrink Vacuum Bag

PACKING

1 per bag | 6 per case

AVERAGE CASE WEIGHT

60 LBS

GRADES

USDA Prime | Choice | Select
No Roll/Ungraded



840 Beef, Oxtail (1791)

CASE/BAG TYPE

Corrugated Boxes/Poly Bag

PACKING

Fill | Wax

AVERAGE CASE WEIGHT

20 LBS

GRADES

No Roll/Ungraded

